

AV Rack

DESCRIPTION

Davis-Legend developed **SFRAME AV rack**, which can meet the requirements of equipment placement and cable management. Moreover, it is designed with features of professional high-strength structure, quick and convenient assembly, easy device installation, and high steel degree material with black-colored electrostatic spraying surface treatment, **SFRAME AV rack** is the ideal option for your AV installation needs.

FEATURES



The product is composed by high-quality, cold-rolled steel with black coating. The thickness of the cover panels, the four vertical bars, and the cross rails are 1.5mm, 2.0mm, and 1.5mm respectively.

The numbered marks make the installation process easier and faster no matter where you start.



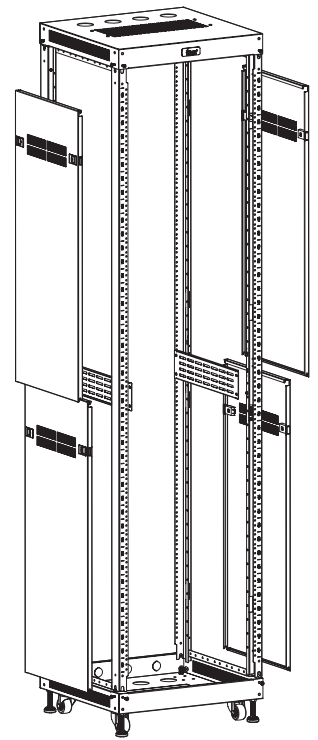
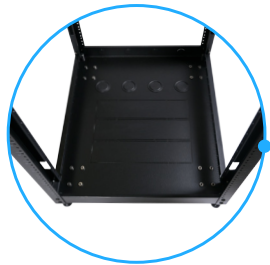
The casters make it easy to move and place the cabinet only by one people. Additionally, the leveling feet are designed to prevent the cabinet from shifting, which ensures the safety and security of the cabinet.



Mounting hole with thread makes it easy for equipment installation without nut. Pre-installed cantilever slab easily manage cable management.



Multiple top and bottom cabinet cabling channels. The size of bottom cabling holes can be adjusted as needed.



SPECIFICATIONS

- 19-inch mounting width suitable for most networking equipment
- Conforms to industry standard ANSI/EIA-310-D mounting configuration
- 600kg (1322lbs) static load capacity
- Body and frame fabricated from cold rolled steel
- Matte black powder-coated finish

ORDER INFORMATION

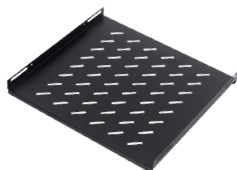
RACK UNITS	HEIGHT	WIDTH	DEPTH	PART NUMBER	COLOR
9U	610mm (24.02 inches)	500mm(19.68 inches)	500mm (19.68 inches)	SRK-SGST-02-9U55	CBK (Black)
12U	743mm (29.25 inches)			SRK-SGST-02-12U55	
18U	1009mm (39.73 inches)			SRK-SGST-02-18U55	
27U	1409mm (55.47 inches)			SRK-SGST-02-27U55	
42U	2075mm (81.69 inches)			SRK-SGST-02-42U55	

- Standard configurations can be ordered as <PART NUMBER>-<COLOR> (eg. SRK-SGST-02-42U55-CBK).
- Floor standing with casters and Wall mount options available.
- Custom configurations also available upon request, please contact our Sales team for more information.

Optional Accessories



2-Way Roof Mount Fan Kit
SRA-UCST-01-50-CBK



500mm Deep Fixed Shelf
SRA-FSST-01-50-CBK



Cable Management Bracket
SUA-LSST-01-CBK



6-Way Horizontal Power Rail
DPU-EHA-1U-060210-06-CSI

